

# DURAFIBERS BUILDING

## 7401 STATESVILLE BOULEVARD

### SALISBURY, NC 28147



PARTNERSHIP for ECONOMIC DEVELOPMENT  
SALISBURY, NC

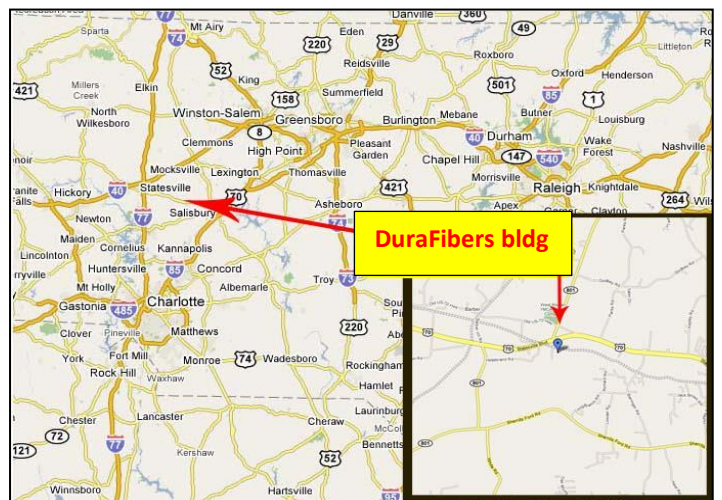
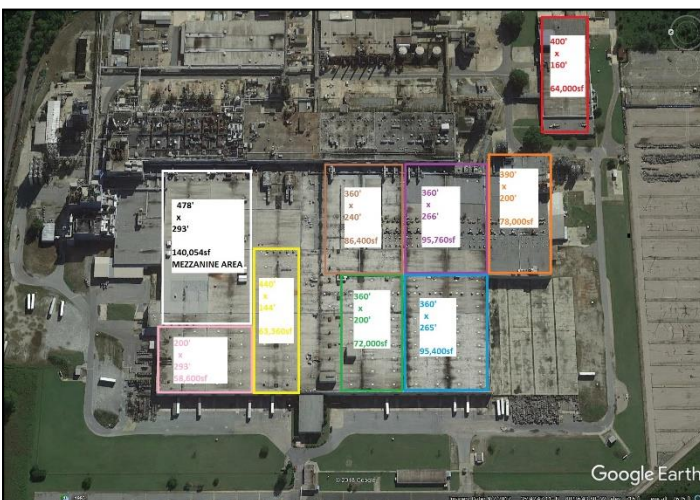
*Be an original.*

The DuraFibers building offers approximately 690,000 square feet of available space for lease (*rate is negotiable*). This versatile space can be divided into sections ranging from 58,600 to 140,000 square feet. Well-lit with 30 foot high ceilings that can accommodate large equipment, it is ideal for industrial, manufacturing or distribution services.

Located on Hwy 70 between Salisbury and Statesville, the building is 14.5 miles from I-85, 15.5 miles from I-77 and 19.5 miles from I-40. Less than 12 miles from the Mid Carolina Regional Airport, the building is within an hour drive of the Charlotte-Douglas International and Piedmont Triad International airports.



INFRASTRUCTURE		
Type	Provider	Distance
Electricity	Duke Energy	On-Site
Natural Gas	Piedmont	On-Site
Water	SRU	On-Site
Sewer	Plant	On-Site
Rail	Norfolk-Southern	On-Site



FOR ADDITIONAL INFORMATION PLEASE VISIT  
[www.ROWANEDC.COM](http://www.ROWANEDC.COM) OR CONTACT  
SCOTT SHELTON AT (704) 637-5526

