

# CHARLOTTE USA : By the Numbers



## Investment in Charlotte USA (2017 Q3 - 2018 Q2)

Through an aggregation of data from the states of North Carolina and South Carolina, as well as communication with our local partners and internal monitoring systems, we have developed a well-researched database of investment in Charlotte USA.

# 121 New & Expanding Companies

2017 Q3	2017 Q4	2018 Q1	2018 Q2
29 Announcements	33 Announcements	29 Announcements	30 Announcements

### The Result:



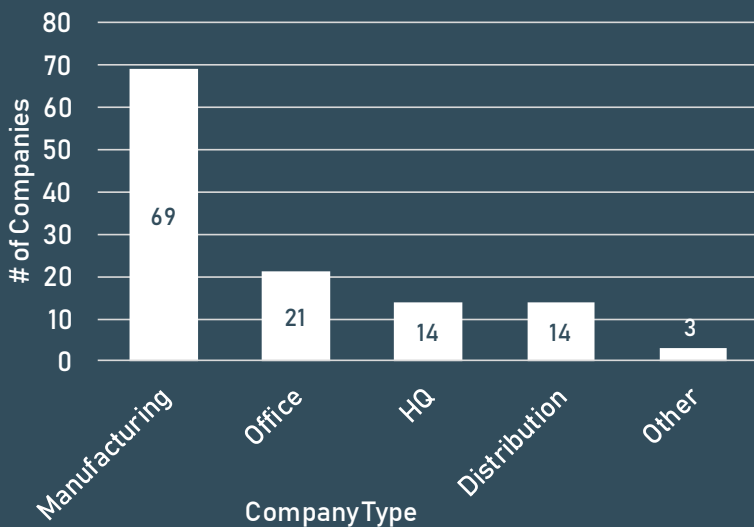
10,125 Jobs Announced



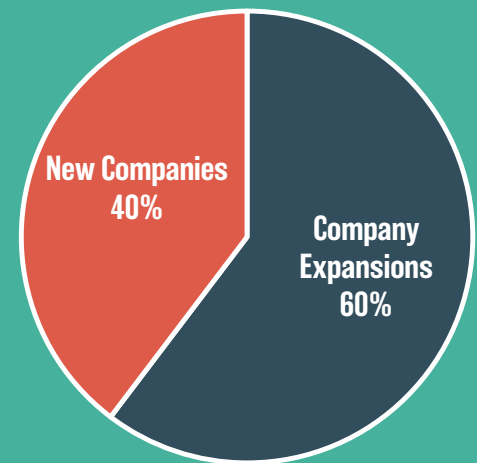
\$1.12 Billion in Capital Investment Announced

2017 Q3	2017 Q4	2018 Q1	2018 Q2
4,001 Jobs	2,466 Jobs	1,729 Jobs	1,929 Jobs
\$430 Million in Capital Investment	\$437 Million in Capital Investment	\$171 Million in Capital Investment	\$203 Million in Capital Investment

### New and Expanding Companies by Type



### New Companies vs. Company Expansions



### Top Sources of Foreign Investment



Germany: 13 Announcements



UK: 4 Announcements



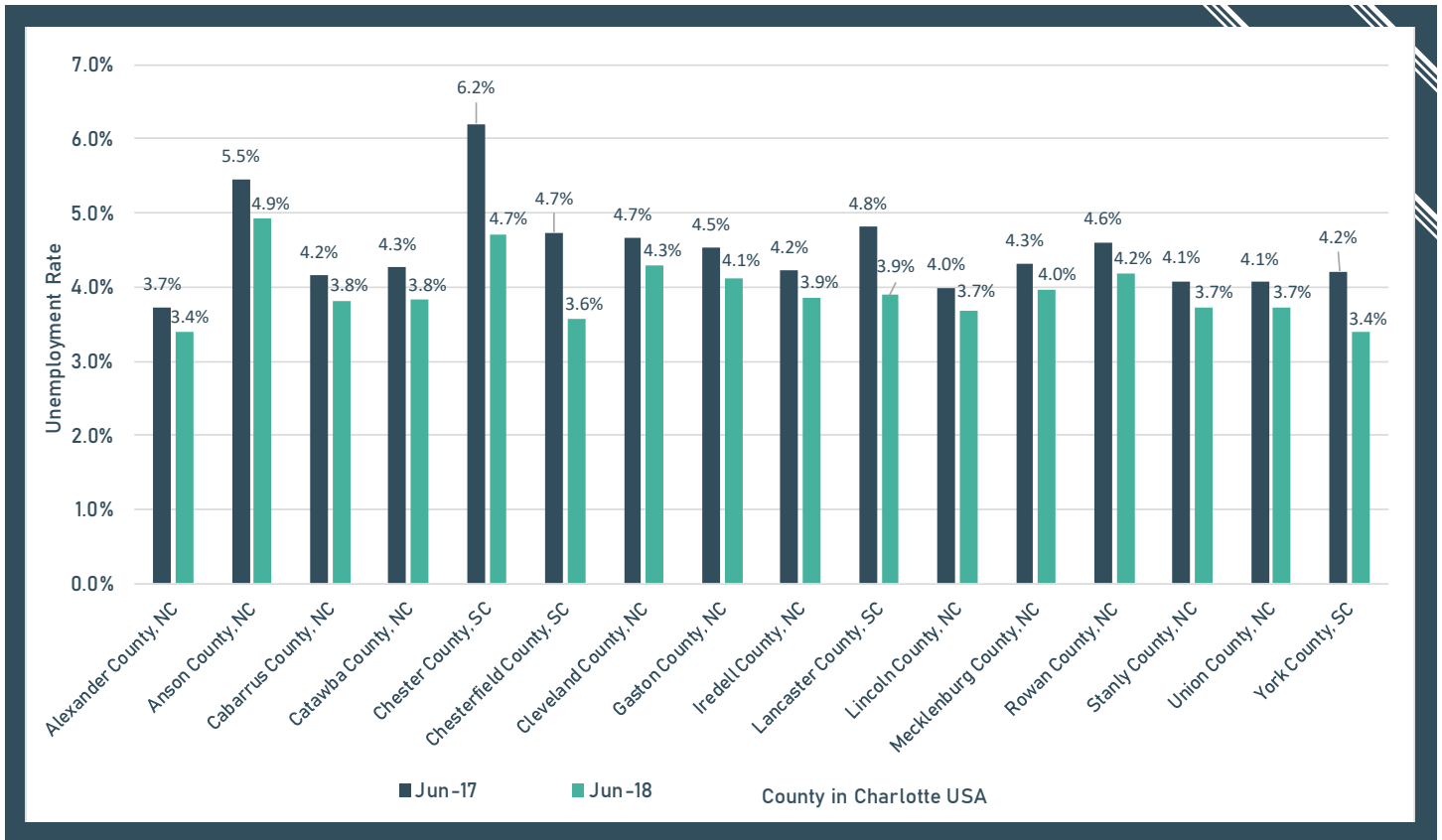
China: 7 Announcements



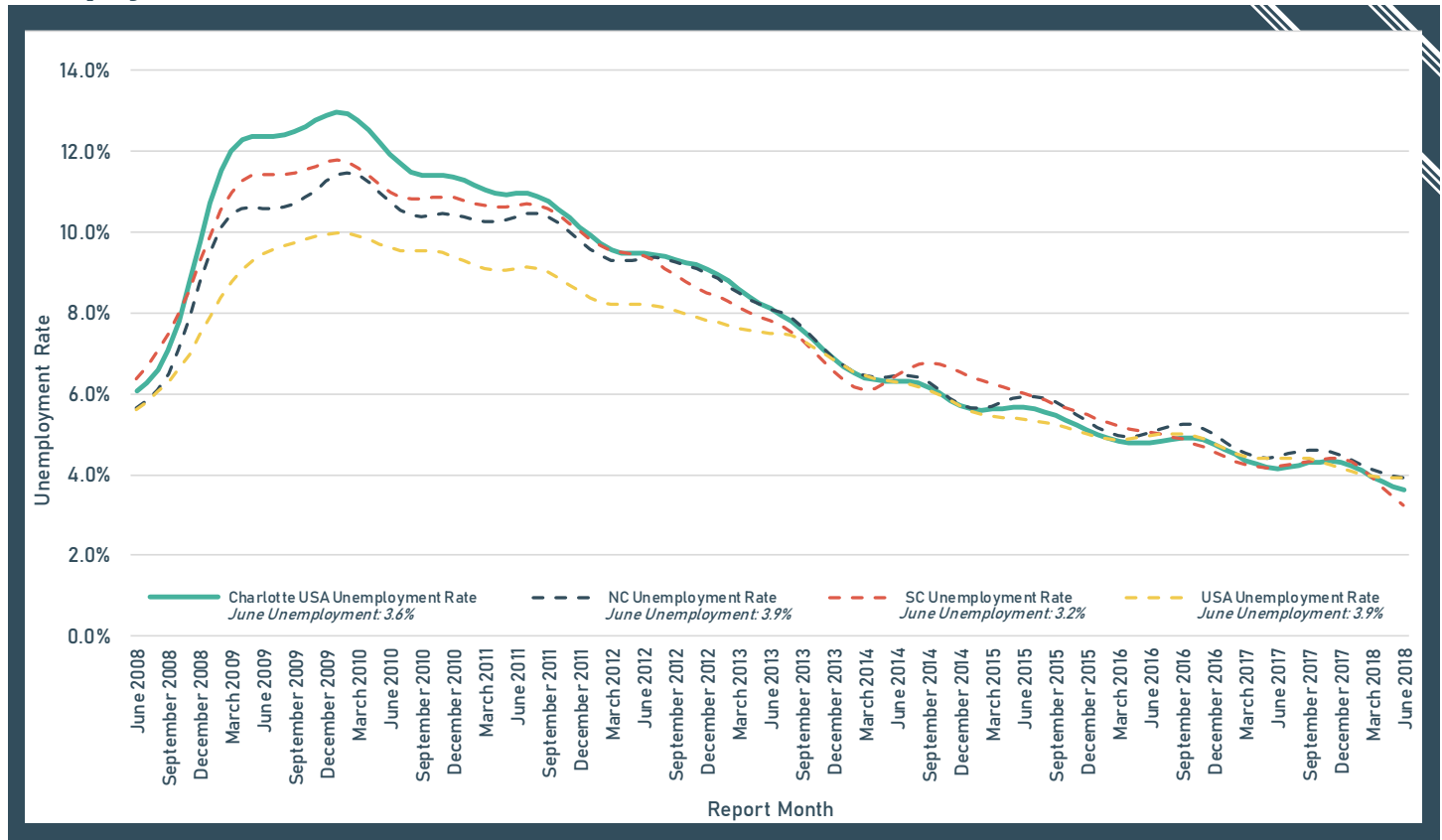
Italy: 3 Announcements

# Regional Trends

## Unemployment Rate by County

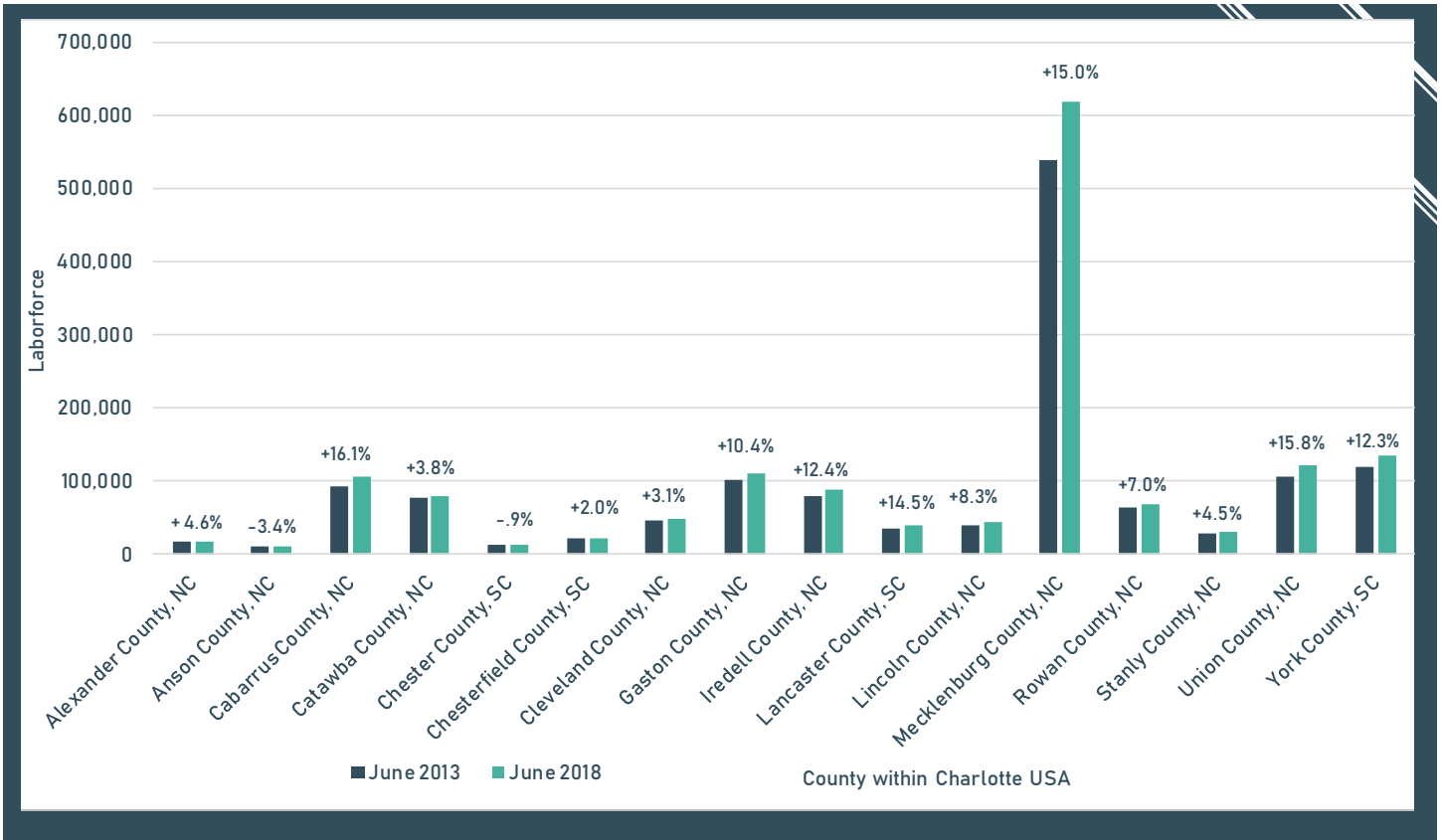


## Unemployment Rate Over Time

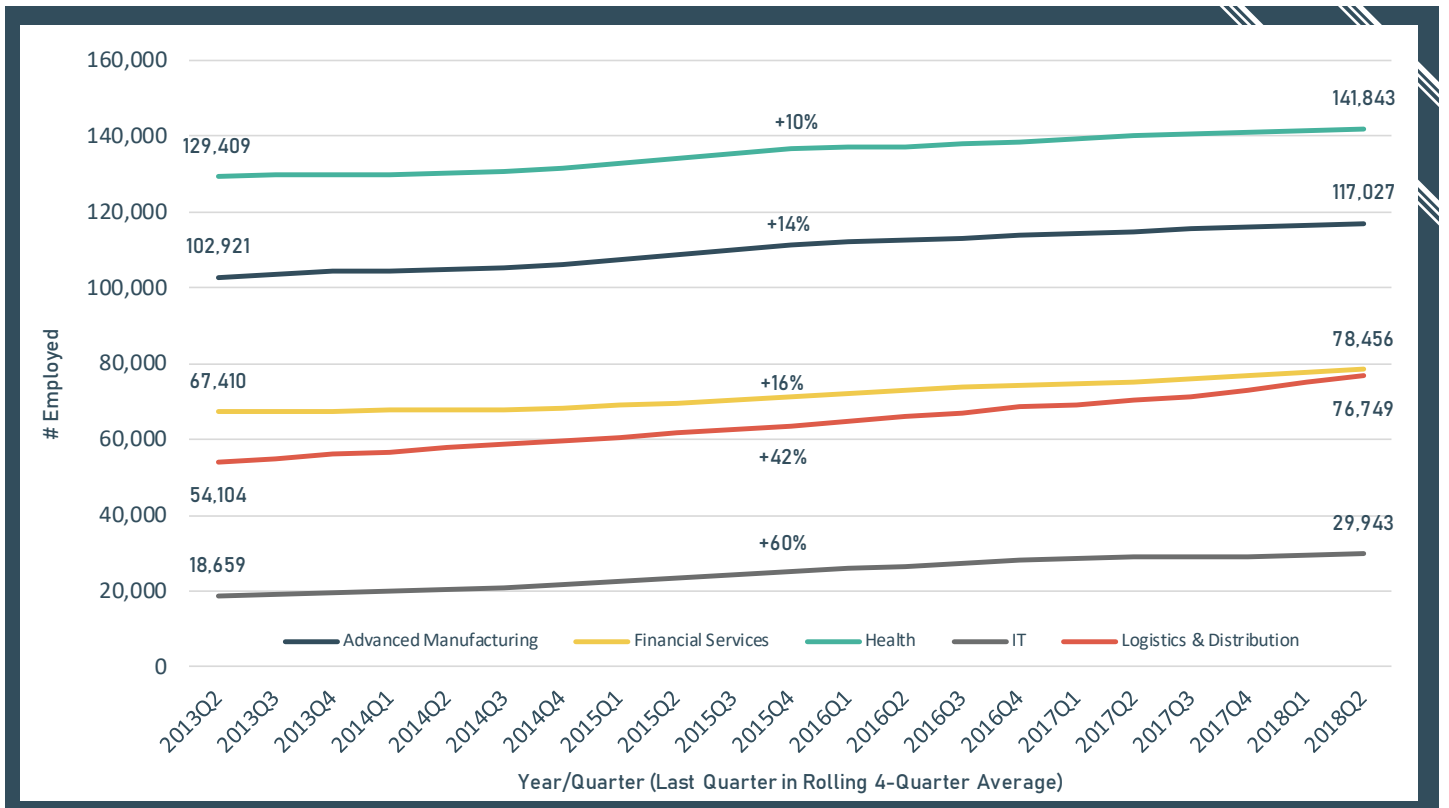


Sources: Bureau of Labor Statistics, Local Area Unemployment Survey via JobsEQ (Unemployment Rate Over Time is Seasonally Adjusted)

### Laborforce by County



### Employment in Charlotte USA's Target Sectors



Sources: Laborforce by County: Bureau of Labor Statistics, Local Area Unemployment Survey via JobsEQ; Employment in Charlotte USA Target Sectors: Bureau of Labor Statistics, Quarterly Census of Employment and Wages (QCEW) through 2017 Q4 & JobsEQ through 2018 Q2.

# Annual Regional Data for Charlotte USA



'12 - '16 Charlotte USA Labor Force Participation Rate\*: **66.0%**  
 '11 - '15 Charlotte USA Labor Force Participation Rate: **66.1%**  
\*Labor force participation rate = labor force (employed & unemployed)/population



2017 Total Jobs: **1,435,169**  
 2016 Total Jobs: **1,399,896**



2017 Gross Regional Product: **\$176 B**  
 2016 Gross Regional Product: **\$167 B**



2017 Population Estimate: **2,950,320**  
 2016 Population Estimate: **2,898,707**

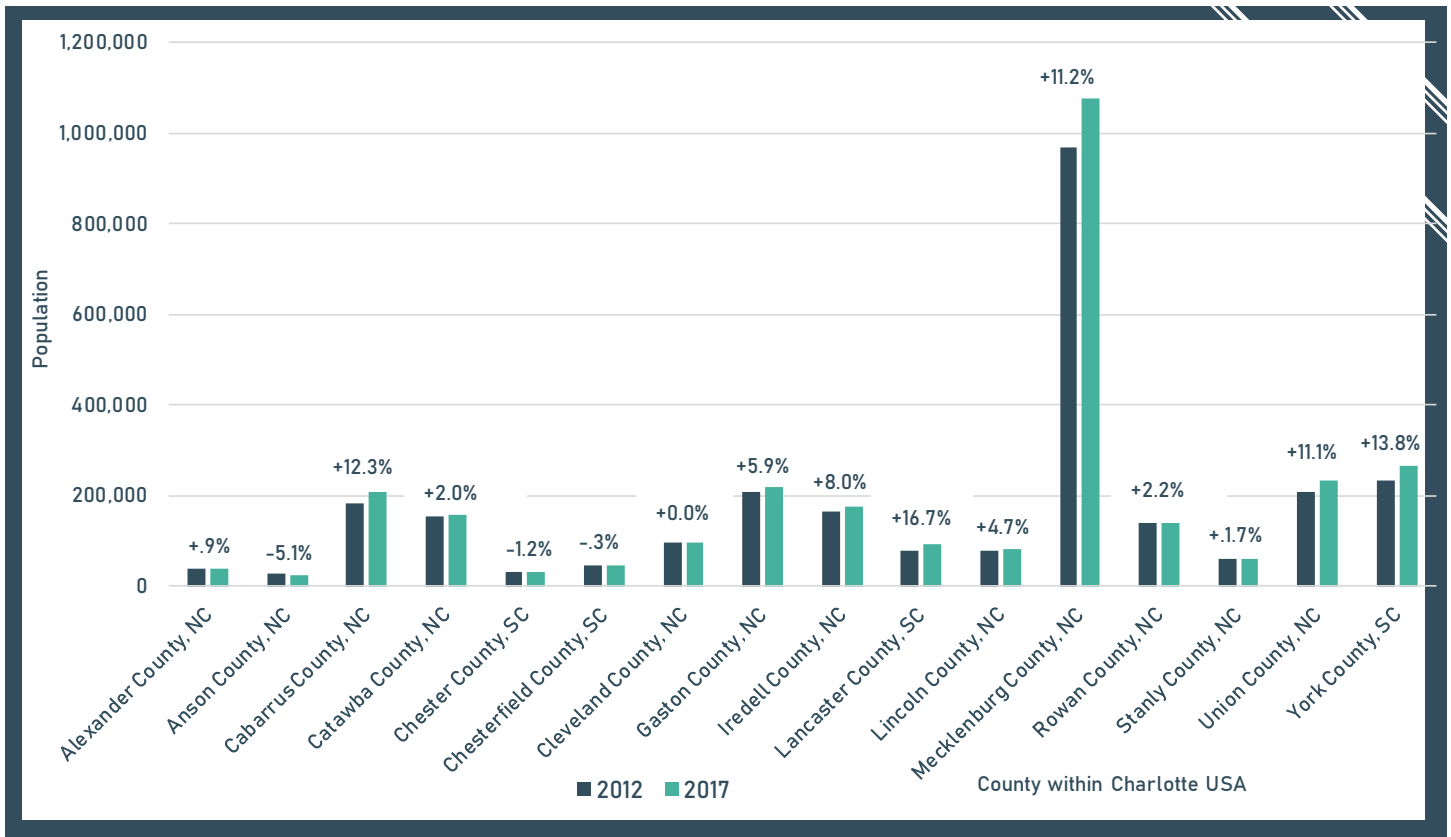


2012-2016 Median Household Income: **\$53,704**  
 2011-2015 Median Household Income: **\$51,559**



2017 Net New Jobs: **35,272**  
 2016 Net New Jobs: **44,845**

## Population by County (2012 vs. 2017)



Sources: Population: US Census Bureau, 2017 Population Estimates; Labor Force Participation Rate & Median HH Income: American Community Survey (2012-2016 5-year estimates) and Jobs EQ; Net New Jobs & Total Jobs: Bureau of Labor Statistics, QCEW and JobsEQ; Gross Regional Product: Bureau of Economic Analysis and JobsEQ.



For further information please contact:  
**Antony Burton**  
 Director, Research  
 (704) 347-6584  
[aburton@charlotteusa.com](mailto:aburton@charlotteusa.com)